

# FOR LEASE | RETAIL

## ROCKWOOD PLAZA

3501-3555 COURTHOUSE ROAD, RICHMOND, VA 23226



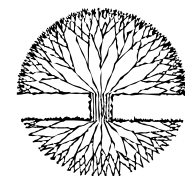
### PROPERTY FEATURE

- 1,395 - 8,046 square feet available
- Rockwood Plaza is a 38,954 SF retail center
- Abundant parking (4.54/1,000 SF)
- C-3 Community Business zoning
- Monument signage along Courthouse Road and Hull Street Road
- Excellent visibility along Courthouse Road and Hull Street Road
- Aggressive lease terms
- Traffic Counts: 32,000 VPD on Hull Street Road and 16,000 VPD on Courthouse Road

DEMOGRAPHICS	1 MILE	3 MILES	5 MILES
Total Households	1,825	17,791	47,170
Total Population	4,523	48,012	127,712
Average HH Income	\$84,817	\$90,517	\$90,849

### For more information, please contact:

Andy Walsh  
 Principal | Director of Leasing  
 AndyW@sugaroak.com  
 Office: (804) 308-1603 | Cell: (571) 237-0264  
 www.sugaroak.com

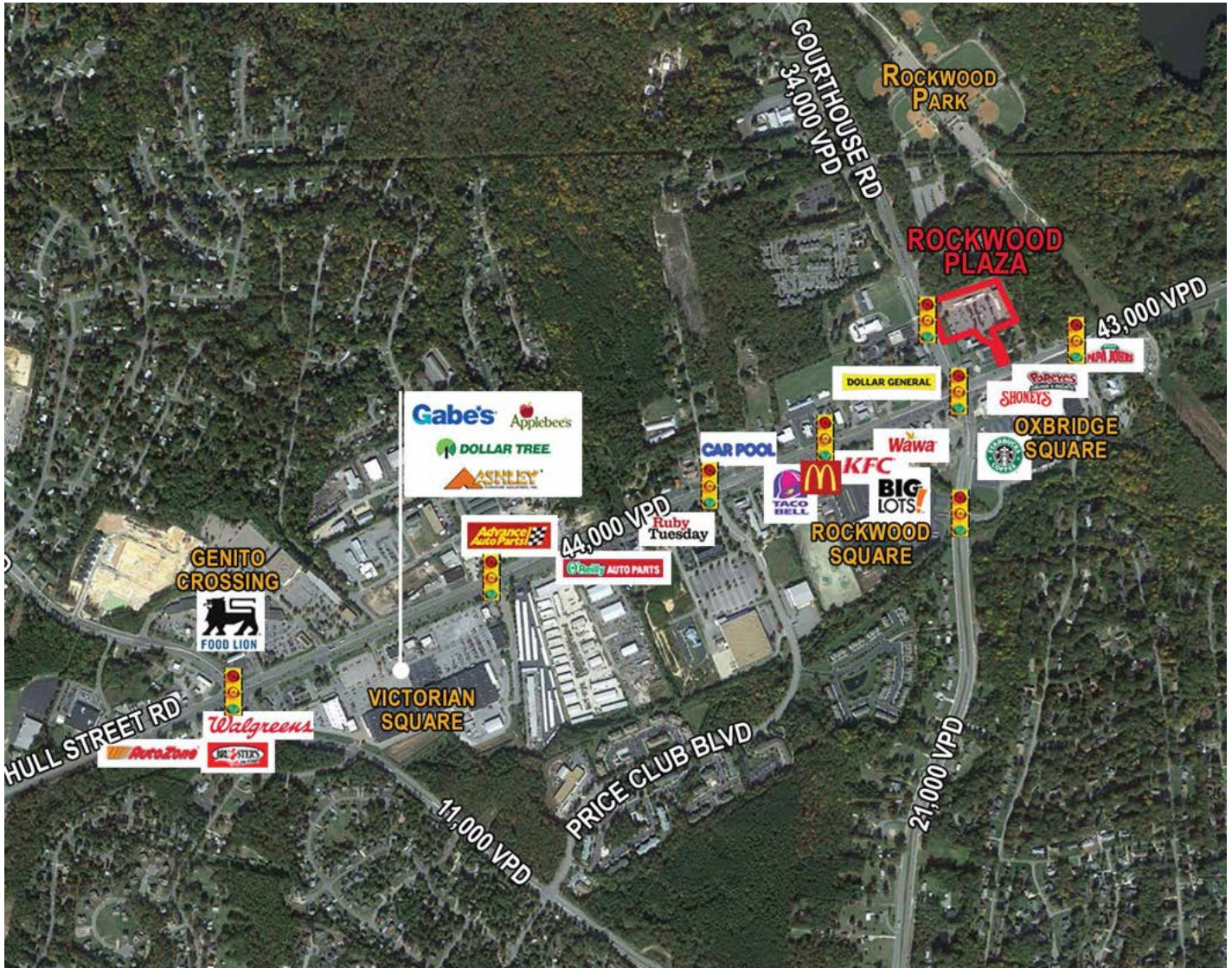


**SugarOak**  
 REALTY, LLC

# FOR LEASE | RETAIL

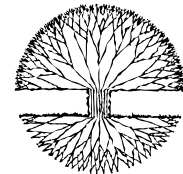
## ROCKWOOD PLAZA

3501-3555 COURTHOUSE ROAD, RICHMOND, VA 23226



**For more information, please contact:**

Andy Walsh  
Principal | Director of Leasing  
AndyW@sugaroak.com  
Office: (804) 308-1603 | Cell: (571) 237-0264  
www.sugaroak.com



**SugarOak**  
REALTY, LLC

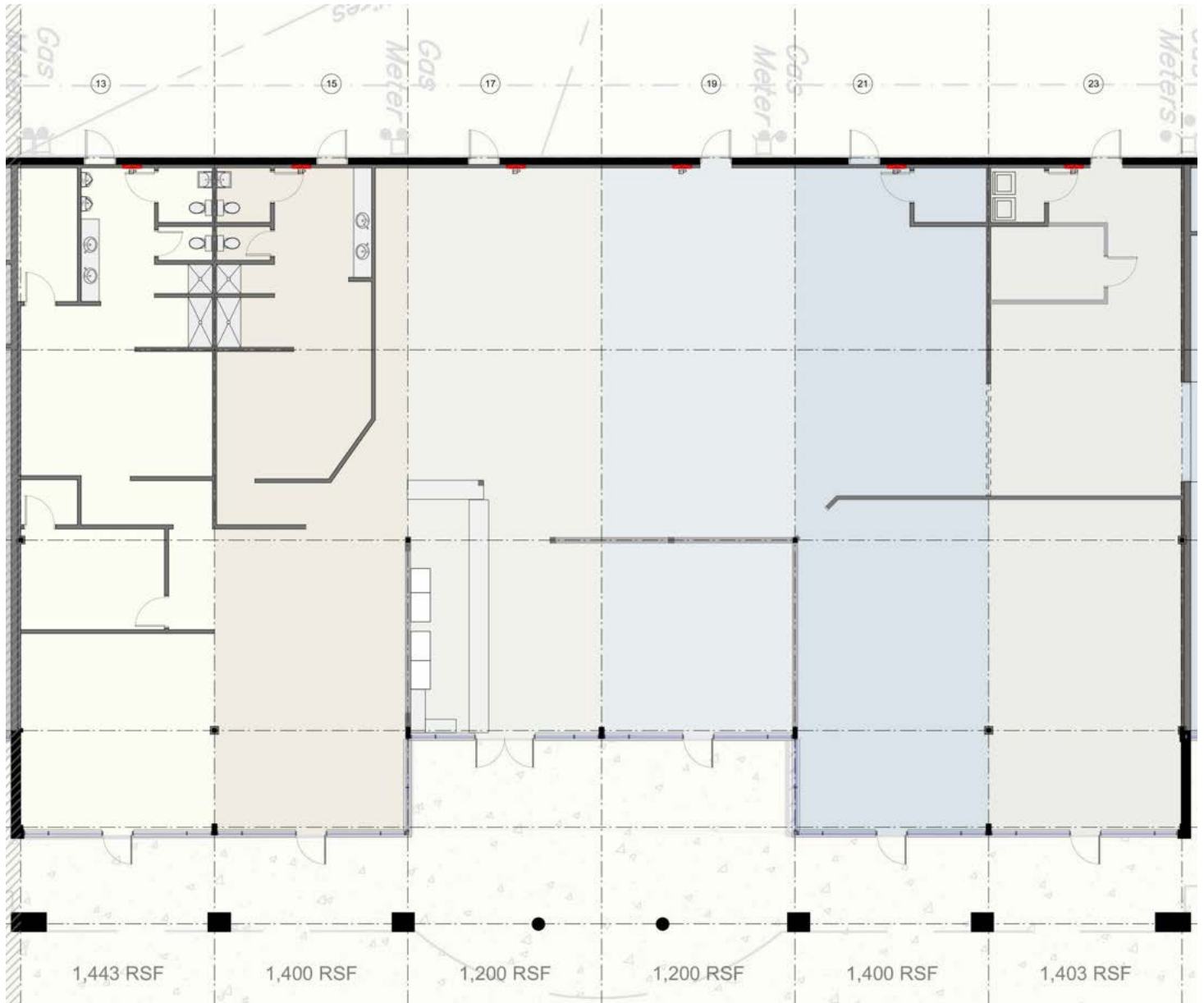
# FOR LEASE | RETAIL

## ROCKWOOD PLAZA

3501-3555 COURTHOUSE ROAD, RICHMOND, VA 23226

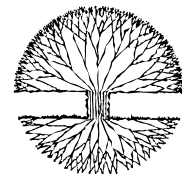
### FLOOR PLANS - SUITE 3513 - 3523

Divisible by: 1,403 SF - 2,800 SF - 4,000 SF - 6,200 SF - 8,046 SF



**For more information, please contact:**

Andy Walsh  
Principal | Director of Leasing  
AndyW@sugaroak.com  
Office: (804) 308-1603 | Cell: (571) 237-0264  
www.sugaroak.com



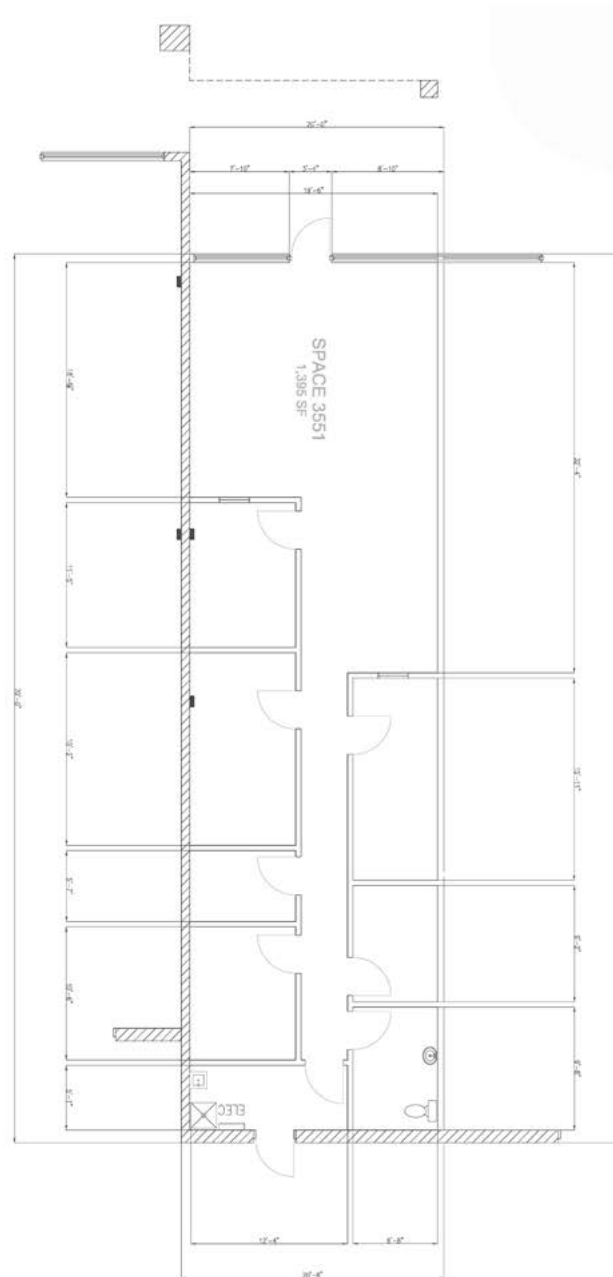
**SugarOak**  
REALTY, LLC

# FOR LEASE | RETAIL

# ROCKWOOD PLAZA

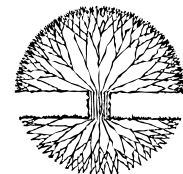
3501-3555 COURTHOUSE ROAD, RICHMOND, VA 23226

## FLOOR PLANS - SUITE 3551



**For more information, please contact:**

Andy Walsh  
Principal | Director of Leasing  
AndyW@sugaroak.com  
Office: (804) 308-1603 | Cell: (571) 237-0264  
www.sugaroak.com



**SugarOak**  
REALTY, LLC